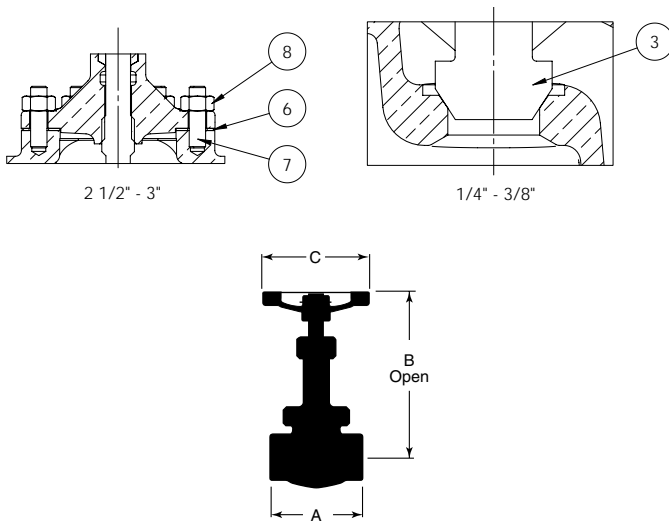
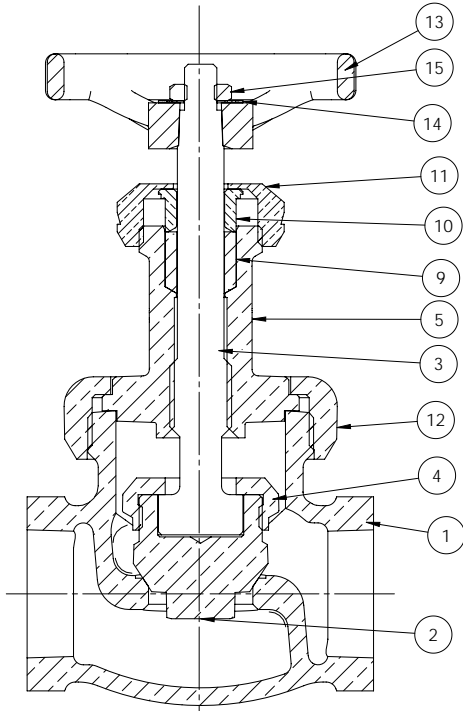


Class 300 • Union Bonnet* • Brz. Disc • Regrinding Seat • Thrd.

Globe Valve Figure B-66



Materials of Construction

No.	Description	Material	ASTM Spec.
1	Body	Bronze	B-61 C92200
2	Disc	(1/2" - 3") Bronze	B-61 C92200
3	Disc Stem	(1/4" - 3/8") Bronze	B-371 C69400
		(1/2" - 3") Bronze	B-371 C69400
4	Disc Stem Ring	(1/2" - 3") Bronze	B-61 C92200
5	Bonnet	Bronze	B-61 C92200
6	Gasket	Synthetic/Glass Fiber with Nitrile Binder	
7	Stud	Steel Cadmium	A-109 C1144
8	Stud Nut	Mild Steel	A-563 Gr. A
9	Packing	Graphite (Asbestos Free)	
10	Gland	Brass	B-16 H02
11	Packing Nut	Bronze	B-61 C92200
12	Union Bonnet Ring	Bronze	B-61 C92200
13	Handwheel	Ductile Iron	
14	ID Plate	Aluminum	
15	Lock Nut	Steel Cadmium	

NOTE:

The addition of the letter "K" at the end of the figure number designates valves assembled & tested in the USA. Materials of Construction & Dimensions are the same.

Industry Standards

Complies with MSS SP-80 Type 1

See Page 6 for Pressure-Temperature Ratings

Dimensions and Weights

Inches (millimeters) - Pounds (kilograms)

Valve Size	Dimensions			Wt.
	B	C	A	
1/4	4.37	2.76	1.94	0.97
	(111)	(70)	(49)	(0.44)
3/8	4.37	2.76	1.94	0.95
	(111)	(70)	(49)	(0.43)
1/2	4.04	2.76	2.56	1.34
	(103)	(70)	(65)	(0.61)
3/4	4.96	2.76	2.96	2.20
	(126)	(70)	(75)	(1.00)
1	5.56	4.02	3.32	3.48
	(141)	(102)	(84)	(1.58)
1 1/4	6.48	4.02	4.02	4.93
	(165)	(102)	(102)	(2.24)
1 1/2	6.88	4.02	4.58	6.75
	(175)	(102)	(116)	(3.07)
2	7.39	4.76	5.70	12.47
	(188)	(121)	(145)	(5.67)
*2 1/2	9.31	5.98	7.25	20.39
	(237)	(152)	(184)	(9.27)
*3	10.57	5.98	8.50	34.72
	(269)	(152)	(216)	(15.78)

* 2 1/2" and 3" have Bolted Bonnet